



Chris Craft 500 Constellation MY – Miss Dottie II

Year: 1986
Make: Chris Craft
Model: 500 Constellation MY

Price: \$ 229,000
Location: Inglis, FL, United States
Engine Make: Detroit Diesel
Engine Model: 6V 92TIB
Hull Material: Fiberglass

Miss Dottie II

Miss Dottie II is a classic flush-deck three-stateroom motoryacht built by one of the premier American yacht builders. She is in outstanding condition due to superb maintenance by knowledgeable owners. Built to last, Chris Crafts are found today throughout the world.

She has three staterooms, two salons, a large engine room and machinery room, a command bridge and a flybridge and huge boat deck.

The interior bulkheads, cabinets and furnishings are satin finished teak, in very good condition. The yacht interior decks are carpeted. There are five reverse cycle air conditioning units serving

all the living spaces. The exterior decks are fiberglass with excellent non-skid. The gelcoat finish is in very good condition, reflecting quality of build and outstanding care.

Measurements

Cruising Speed:	20 kn	Displacement:	54000
Max Speed:	24 kn		lb
LOA:	50 ft 6 in	Fuel Tanks #:	4
Beam:	15 ft 3 in	Fuel Tanks Capacity:	600
Max Draft:	4 ft 4 in		gal
		Fresh Water Tanks #:	1
		Fresh Water Tanks Capacity:	160
			gal
		Holding Tanks #:	1
		Holding Tank Capacity:	100
			gal

Propulsion

Engine #1

Engine Make:	Detroit Diesel	Hours:	1500
Engine Model:	6V 92TIB	Power:	550 hp
Primary Engines:	Inboard	Propeller Type:	4 Blade
Drive Type:	Direct Drive		
Location:	Port		

Engine #2

Engine Make:	Detroit Diesel	Hours:	1500
Engine Model:	6V 92TIB	Power:	550 hp
Primary Engines:	Inboard	Propeller Type:	4 Blade
Drive Type:	Direct Drive		
Location:	Port		

Layout

The command bridge is the operating center of Miss Dottie II, located on the main deck just forward of the upper salon. To port is a stairway to the main salon. Aft of the helm seat is a glass partition and a console with wet bar including refrigerator, ice maker, liquor locker, stainless steel sink with built-in water filter. Furnishings in the upper salon are wicker. Aft of the upper salon is a small line handling deck which simplifies docking. Wing doors to port and

starboard of the command bridge permit access to the foredeck. An inclined stainless steel and teak ladder provides access from the command bridge to the spacious flybridge with upper helm and extensive seating. Access to the lower salon from the command bridge is via a staircase forward to port. The galley is forward to starboard with an L-shaped settee and dining table to starboard aft. To port is the dining area. Aft to starboard is a very comfortable conversation/reading area/lower salon.

Forward from the galley is the forward stateroom with upper and lower large twin berths, stacked washer and dryer, hanging locker and en suite head with separate shower.

Aft from the lower salon is an amidships starboard guest stateroom/office, with desk, couch, Pullman-style upper berth and hanging locker. A head with separate shower is opposite to port.

Fully aft is the full beam master stateroom with walk around queen-bed, dressing table, walk-in hanging locker and en suite head with separate shower/bath tub.

Command Bridge

The command bridge is the operations center of Miss Dottie II and has been significantly upgraded from original. With easy access to port and starboard midships and foredeck through wing doors, or to the flybridge via the inclined ladder, a clear 360 degree view of the surroundings is provided. There is a helm seat/bench, stainless steel destroyer wheel, and extensive operating gauges. (rpm, oil pressure, engine temperature) In addition to conventional engine instrumentation, this knowledgeable owner has added gauges to monitor raw water pressure, Racor fuel vacuum, fuel pressure to the engine, air filter vacuum (at the Walker Aircept filters), and steering fluid pressure, so that he has full knowledge of the operational status of his vessel.

Upper Salon

The upper salon is on the main deck, aft of the command bridge helm station. Forward is the wetbar with stainless steel bar sink, water filtration, ice maker, refrigerator, and liquor locker. The furnishings are wicker chairs and a love seat. The deck is fully carpeted. The waterfront view from the upper salon is spectacular. Aft of the upper salon is a line handling station with custom docking control station.

Main Salon

Down five stairs to the light and airy main salon with dual recliner love seat and two chairs, TV and DVD recorder/player.

Galley and Dining

Forward to starboard is the U-shaped galley with full size double-door refrigerator with ice and water dispensers in the freezer door. There is a double stainless steel sink with water filter, and instant hot water heater, dishwasher and trash compactor. The three-burner Galley Maid Empress electric stove has a stainless steel oven, rotisserie and counter top cutting board cover. the vented hood has a microwave with turntable. The L-shaped dining area with heavy glass

topped table is immediately to port enabling easy start-to-finish meal preparation, serving and clean up.

Master Stateroom

The immaculate master stateroom is aft with walk-around queen size bed, dressing table, walk-in cedar-lined and lighted hanging locker with full-length mirrored doors and extensive locker and drawer storage. Perfect woodwork, plush carpet, spotless bulkheads and overhead and retro décor describe this spacious stateroom. there is an en suite head with enclosed shower and bathtub.

Guest Stateroom/ Office

To starboard this stateroom is forward to starboard of the master and has a desk, couch, Pullman-style upper berth, hanging locker and extensive storage. Opposite to port is a full head with separate glass-enclosed shower.

Foward Stateroom

Forward of the Galley, dining area and main salon, the forward stateroom has large twin upper and lower berths, hanging locker, and a separate compartment with the stacked washer and dryer. There is an en suite head with separate shower.

Mechanical

Extremely well-maintained by very knowledgeable and particular owners, Miss Dottie II has received the best of possible care and upgrades.

- 550 HP Detroit 6V 92TIB diesel engines provide 20 knot cruise
- Walker Air Seps
- RACOR fuel polishing systems with instant fuel primers
- Algae X magnetic fuel conditioners
- Upgraded engine coolant reservoir and injection system
- WIX coolant filters
- Primary and secondary Halon automatic engine room fire extinguishing system
- Electric block heaters
- Battery paralleling for reserve engine start
- Glendinning synchronizers
- MG 509 Twin disc transmissions
- 2 1/2" shafts
- Muff couplings and tail shafts
- Spare tail shafts, spare muff couplings

- PSS dripless shaft seals
- 30" x 32" NIBRAL computer balanced propellers
- Spur, line, net and weed cutters
- Two way oil change system
- 110 volt and 12 volt fresh water pumps
- Custom air conditioner strainer purge system
- Watermaker (pickled)
- (5) 1500 gpm automatic bilge pumps
- (3) 1500 gpm sump pumps

Electrical

- 20 kW Onan generator in sound shield - 525 hours
- 1500-3500 Watt inverter
- (6) deep cycle ship service batteries
- (6) engine start batteries
- 4D generator engine start battery
- Battery parallel switches
- Battery charger

Control Bridge Electronics

- Standard Horizon chart plotter
- Micrologic GPS
- Color video from engine room or stern
- Autopilot Robertson AP 2000DL
- Raytheon 48 mile radar CRT display
- Uniden Polaris VHF radio with external speakers
- Standard Horizon wind and weather station
- Color video from engine room and stern cameras

Flybridge Electronics

- Standard Horizon chart plotter
- Color video from engine room and stern cameras
- Autopilot Robertson AP2000DL (remote)

- 48 mile Raytheon plugs to permit radar display relocation
- Uniden MC795 VHF with external speakers
- Standard Horizon digital depth (backup)
- Datamarine digital depth (remote)
- 8-foot cell phone antenna
- Loud hailer
- Searchlight
- Datamarine 3000 digital depth
- Stereo Am/FM radio

Entertainment and Communications

- AM/FM stereo radio with speakers throughout boat
- TVs which play through speaker system
- Satellite TV
- Local TV antenna
- WiFi antenna
- 5-stateroom intercom

Flybridge

- Helm and co-pilot seats with foot rests
- Large lounge seats (seat 12)
- Fold down radar arch
- Custom teak accented table
- Forward and aft bimini tops
- Sunbrella covers for all seats
- Full electronics and monitoring stations
- Spotlight
- Loud hailer

Deck Systems

The fiberglass decks and gel coat non-skid are in excellent condition.

- Ideal electric windlass with local controls and controls at upper and lower helm
- 200' 5/16" HT galvanized chain

- 300' 5/8" nylon rode
- 35-pound Danforth anchor
- Custom anchor bridle
- 55-pound Fortress storm anchor
- 20' 7/16 HT galvanized chain & 300' 1" nylon storm rode
- 9-foot Achilles inflatable dinghy with 5HP Yamaha outboard
- Swim platform dinghy mount
- (2) large fiberglass foredeck boxes
- Uninspected 6-person life raft and ditch bag
- Extra lines, fenders, hoses
- Bow seat with cushions and cover
- (2) folding bicycles
- 110v/220v shore power inlets port & starboard

Brokers Remarks

Miss Dottie II has only had two owners and has spent the majority of her life in fresh water and a covered slip. The first owner had her for six years on the Delaware River. The current owners have pampered her for the last 23 years in a purpose built boat house on the Withlacoochee River near Crystal River, FL. This extremely knowledgeable couple built an adjacent woodworking, welding and machine shop which allowed the former competition motorcycle mechanic to duplicate and replace virtually all chromed or aluminum parts with high quality brightly polished stainless steel. In the process, he often improved the functionality of equipment and systems. The high quality finish has been protected in the boat house and the varnish is in excellent condition. The interior is in excellent condition and the classic style can be retained or modernized, depending on your wishes. Most of the appliances have been replaced. The powerful engines and drive trains have received top-of-the-line maintenance and care. Known for long-life when installed in motor yachts, these engines will cruise comfortably at 20 knots and top out at 24 knots. The owners are selling this fine vessel due to their advanced age.

DISCLAIMER

The Company offers the details of this vessel in good faith but cannot guarantee or warrant the accuracy of this information nor warrant the condition of the vessel. A buyer should instruct his agents, or his surveyors, to investigate such details as the buyer desires validated. This vessel is offered subject to prior sale, price change, or withdrawal without notice.

Photos



Sistership



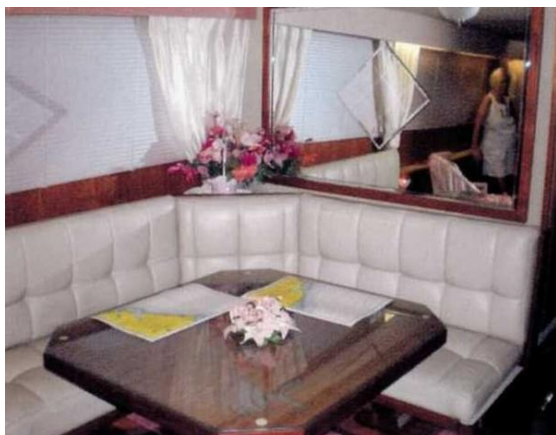
Miss Dottie II - 20 knot cruise



Guest Stateroom/Office



Command Bridge



Dining



Command Bridge - Lower Helm

