



## Marlow Explorer 57C – Beech to Beach

<b>Year:</b>	2003	<b>Price:</b>	\$ 1,095,000
<b>Make:</b>	Marlow Explorer	<b>Location:</b>	Snead Island, FL, United States
<b>Model:</b>	57C	<b>Engine Make:</b>	Caterpillar (2)
<b>Builder:</b>	Marlow Yachts LTD	<b>Engine Model:</b>	3406E
<b>Designer:</b>	Marlow Design Team	<b>Hull Material:</b>	Composite



### Beech to Beach

---

Beech to Beach is the perfect size for a couple that want to run their own boat, but still have enough room to stay on board for extended periods of time. The open floor plan of the Salon and Pilothouse make her feel like a much larger vessel than her 57 feet. The full beam master stateroom is amidship which is the quietest, most stable part of the boat. She is happy running for days at 8-10 knots or you can run her up to 17 knots when you want to get there fast. She is a very clean boat with low engine and generator hours. Her hull was painted with Blue Awlgrip several years ago at the Marlow Marine Snead Island facility. She is stabilized and carries 1,200 gallons of fuel making her a great boat for extended voyages.

## Measurements

---

Cruising Speed:	16 kn	Displacement:	64000 lb
Cruising Speed RPM:	2150	Windlass:	Electric Windlass
Max Speed:	19 kn	Fuel Tanks Capacity:	1200 gal
Max Speed RPM:	2300	Fresh Water Tanks Capacity:	300 gal
Range:	1200 nmi	Holding Tank Capacity:	200 gal
LOA:	62 ft 2 in	Number of Cabins:	3
LWL:	53 ft	Number of Heads:	2
Beam:	18 ft 4 in		
Min. Draft:	4 ft 6 in		

## Propulsion

---

### Engine #1

Engine Make: Caterpillar (2) Hours: 1866  
Engine Model: 3406E Power: 800 hp  
Primary Engines: Inboard

### Engine #2

Engine Make: Caterpillar (2) Hours: 1855  
Engine Model: 3406E Power: 800 hp  
Primary Engines: Inboard

## Features

---

### Inside Equipment

- Dishwasher
- Washing Machine
- Oven
- Microwave Oven
- Hot Water
- Fresh Water Maker
- Sea Water Pump
- Bow Thruster - 15HP Electric
- Electric Bilge Pump
- Manual Bilge Pump
- Air Conditioning - Chilled Water Marine AIR
- Refrigerator - Sub-Zero Drawers
- Deep Freezer - Sub-Zero Drawers
- Battery Charger - 12V, 24V, Inverter Charger

## Outside Equipment/Extras

- Teak Cockpit
- Tender
- Swimming Ladder
- Cockpit Shower
- Cockpit Cushions - Recently recovered in Sunbrella

## Covers

- Bimini Top

## Salon

---

As you walk through the door to the salon from the aft deck the first thing you notice is that you can see beyond the salon into the pilothouse and out the front windows, creating a very open feel. There are built in seats to port and starboard. The seats lift up providing great storage underneath. The television is on the forward end of the salon. There is a teak high/low in front of the large settee on the starboard side. The floors are teak and holly and the interior walls are all teak finished in satin varnish. At the forward end of the salon there is a full bar with a sink and refrigerator with ice maker.

## Galley and Pilothouse

---

The galley is 3 steps up from the forward end of the salon. The U-shaped counters are done in Black Galaxy Granite with beautiful teak fiddles. The Sub Zero drawers keep the galley more open so you can see into the salon. She has all the features of a great kitchen on land including a Dacor smooth surface cooktop, convection / microwave oven, full size conventional oven, and a drawer style dishwasher. There are lots of drawers and cabinets for storage. For those that can get queasy at sea this galley up arrangement is much more comfortable because you can see the horizon while working in the galley.

## Master Stateroom

---

The master stateroom is amidship where you have the least motion. The entire stateroom is finished in satin teak making the room warm and inviting. This full beam master is very spacious and this is the room where you will really appreciate her 18'4" beam. The head and shower are on the port side. There is lots of counter space and a nice large shower. The stateroom and head have lots of storage shelves and drawers giving you the space to have everything you need to live aboard for extended periods of time. The aft bulkhead and fuel tanks are aft of the master stateroom. The bulkheads and fuel tanks provide great sound and vibration insulation making this an exceptionally quiet stateroom at the dock or underway.

## VIP Stateroom

---

The VIP features an island queen bed with 2 large overhead opening hatches. There is a nice cedar lined hanging locker to port and starboard and 6 large drawers under the berth. The VIP guests have direct access to the head. The VIP head is very spacious and has granite

countertops and Grohe fixtures. The shower is large and open with a clear wall forward and a clear door so you won't feel claustrophobic. Any guest will feel at home in this stateroom.

## Port Guest

---

The port guest stateroom is on the port side of the vessel. This room features 2 comfortable bunks that will sleep a 6' adult comfortably. There is a nice hanging locker forward and drawers for storage below the lower bunk. At the aft end of the stateroom there is a nice desk area with storage and file drawers making this a great office when you do not have a full boat.

## Flybridge

---

Her full bimini softtop and side panels provide protection from the sun and/or inclement weather. The enclosure is very well done and many of the panels open for good ventilation. The Stidd helm seat is on the centerline and offers great visibility in all directions. The seating is arranged in two separate areas to port and starboard. There is plenty of space for 6-8 adults. As you use the yacht you will find that the visibility at the lower helm is excellent and there is no reason to be up here on a bad day. This is a great entertaining area as well with a drink refrigerator with ice maker, sink, and grill. Once the dinghy is in the water you have a nice sunny deck space as well. The davit is rated at 1,000 lbs.

## Electrical System

---

- (4) 50A Cablemasters, 2 aft, 2 at bow
- Battery disconnect switch
- Polarity reverse indicating light
- 4,000 watt Inverter with bypass switch
- AC electrical system with voltage and amp meters
- DC electrical system with voltage and amp meters
- Electrical bonding system
- 20kW Northern Lights generator with clear Lexan soundshield (1525 hours)
- 12kW generator with clear lexan soundshield (1156 hours)
- Battery parallel switch
- AGM batteries (house and bow thruster just replaced)
- Engine alarm system, oil and temperature

## Electronics

---

- Raymarine RL80C RC Radar/Chartplotter 10.4 with 10kW 4' Array
- Raymarine L1260 DRC Sounder/Chartplotter 10.4' display
- Raymarine L1260 Display 10.4"

- 2 Raymarine L1250 10.4' Displays
- Raymarine 7001 + AP with remote at flybridge
- 2 Raymarine 120 WAAS GPS
- KVH TracVision 4
- KVH TracPhone 252
- ICOM 602VHF
- ICOM Command Mic
- 2 9DB antennas
- Engine room and aft cameras
- AquaSignal navigational light system

## Deck and Hull

---

- Kahlenberg air horns
- Hot/cold transom shower
- Bruce 11lb anchor with 200' 3/8" BBB chain
- Danforth Hi-Tensile anchor with 150' 3/4" rode
- 1000lb davit
- Swim platform and swim ladder with teak inlay
- Custom Stamoid bimini top with 3 sided enclosure (40 gauge)
- Fresh water and seawater wash down system fore and aft
- Ships bell
- Radar arch
- Oval stainless steel side rail
- Stainless chocks and cleats
- Dock lines
- 4 fender holders
- Searchlight
- Non-skid FRP decks
- Solid Stamoid windshield covers flybridge helm cover

## Lazarette

---

As you descend from the aft deck you land in the lazarette. This is a great storage area and is finished like the rest of the yacht. Outboard the full length of the space you find louvered teak doors that conceal many of the mechanical and electrical systems. This area is air-conditioned

and well lit. There is a sink to wash your hands after working in the engine room. The watertight engine room door has a round glass window so you can peek in prior to opening the door. This area will easily house your deck furniture, cushions, fenders and lines.

## Engine Room

---

The engine room is very clean. The bilges are completely finished making them easy to keep clean. Even the engine beads are done in polished stainless steel. The space is air-conditioned and you have over 6' of head room with great access to both engines and the generators. The fuel system is very simple and you normally configure it so the 2 tanks are valved together so you can fill the boat from either side as if it were one big tank. The drive system is fitted with Aquadrive units and special soft motor mounts providing a yacht that is much smoother and quieter underway than a traditional direct drive shaft system. There are 24V lights and bright 110V florescent fixtures over each engine. Above the watertight engine room door there is an engine room camera that can be displayed at either helm station.

## DISCLAIMER

---

The Company offers the details of this vessel in good faith but cannot guarantee or warrant the accuracy of this information nor warrant the condition of the vessel. A buyer should instruct his agents, or his surveyors, to investigate such details as the buyer desires validated. This vessel is offered subject to prior sale, price change, or withdrawal without notice.

# Photos

---



Beech to Beach



Salon



Salon stbd side



Salon port side



Galley



Pilothouse & Seating



Pilotouse Helm Station



Pilotouse Helm Station



Lower Helm Chair



Master Stateroom



Master Head - Sink

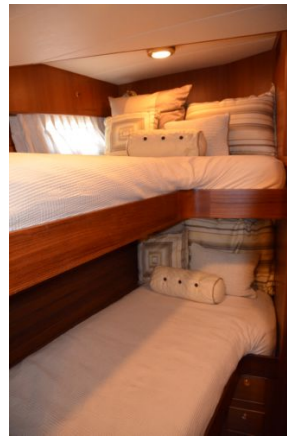


Master Head - Shower





VIP Stateroom



Guest Stateroom



Guest Stateroom - Desk



Head



Washer/Dryer



Flybridge



Flybridge



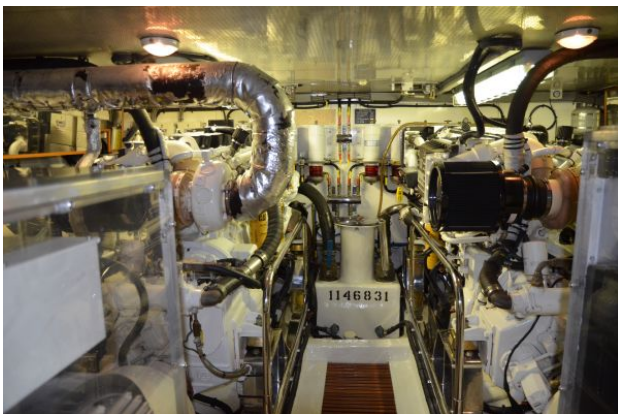
Flybridge



BBQ Grill



Large Aft Seat



Engine Room



Bow View