



# Marlow Explorer 58

Quality, Versatility, Performance, Value



*The 58 was born from the experience of delivering dozens of 57's. We made the cockpit a foot longer and that gave more storage space below and freed up the Fly bridge space by moving the dingy aft - David Marlow*

Why compromise when you can have everything you want? The Marlow 58 gives you better range than a slow trawler while providing very fast passage making capabilities; with the ability to do 20+ knots with optional C-18's for over 400 miles. All this capability while still offering you the flexibility to build the layout that suits your cruising style and personal tastes. Our own state of the art factory and proprietary manufacturing techniques let us provide this at a lower cost than yachts far below our class.

## Marlow 58

LOA 67'8" Beam 18' 6" Draft 4'10"

Fuel 1500GAL Water 300GAL Waste 125GAL

## Performance

Range at 8.3 knots 1,440+ NM

Range at 20 knots, 400 NM

- 2-3 Staterooms & crew
- Command Bridge or Open Bridge
- Cruise at 20+ Knots with C-18's
- 1 Gallon per Nautical Mile at 8 knots, range 1,440+ miles
- Highly Customizable Interiors
- 18'6" Beam Provides more interior volume than any Yacht in her class

Marlow Marine Sales Inc.  
4204 13th Street Court West  
Palmetto, FL 34221

Phone: 941-729-3370  
Fax: 941-729-4955  
E-mail: Sales @MarlowMarine.com





# Marlow Explorer 58

## Standard Equipment and Available Options

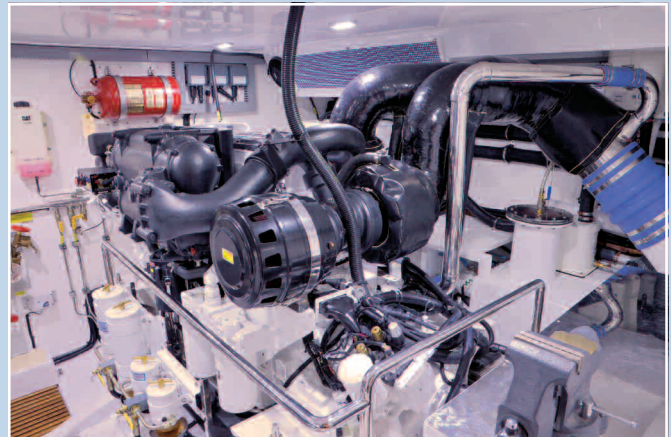
### Standard Equipment of Note:

- Fluid Drive shaft system and soft engine mounts for smooth quiet cruising
- Fully infused hull and superstructure
- Choice of Granite for Galley and Heads
- Fully finished bilges and engine room
- Velocijet Strut Keels for propeller protection and superior sea keeping
- Fully integrated inverter system to power all refrigeration and outlets on the yacht
- Sea Chest eliminates strainers and a dozen thru hull fittings
- Grohe faucets, Schwepper door hardware,
- Granite in galley and heads standard
- All composite tanks



### Custom Interiors

Lower deck with Maple and teak to brighten things up



### Available Optional Equipment of Note:

- Yacht built for you, built to order
- Optional power to 1,150 HP engines
- Electronics package specified by customer
- Joysticks and wireless remotes available
- Bow shore power cable masters available
- Choice of Awlgrip Hull paint color including Flag Blue
- Enclosed Bridge and Crew cabin are available
- Factory installed water maker
- Choice of thrusters, stabilizers, and other systems
- Custom cockpit seating, tables, and cabinetry available
- Second generator available
- Choice of Davit, twin davits available
- All soft goods specified by customer, bed spreads, pillows, window treatments, and headboards.
- Custom boarding doors, hand holds, and other safety features available at customers request.

Marlow Marine Sales Inc.  
4204 13th Street Court West  
Palmetto, FL 34221

Phone: 941-729-3370  
Fax: 941-729-4955  
E-mail: Sales @MarlowMarine.com