



## Marlow Explorer 70E-CB – Jackpot II

<b>Year:</b>	2008	<b>Price:</b>	\$ 1,900,000
<b>Make:</b>	Marlow Explorer	<b>Location:</b>	Snead Island, FL, USA
<b>Model:</b>	70E-CB	<b>Engine Make:</b>	Caterpillar
<b>Builder:</b>	Marlow Yachts LTD	<b>Engine Model:</b>	C-18, 2x1015hp
<b>Designer:</b>	Marlow Design Team	<b>Hull Material:</b>	Composite

### Jackpot II

---

Occasionally something new and very different will appear in the marketplace and the effect that it has is profound. David Marlow knew from the very first days of development that the **Marlow Explorer** would excel in every test applied from strength to performance to visual beauty. He knew that yachtsmen who demanded quality, performance and innovation would want to experience the Marlow Explorer. What has overwhelmed him is the immediate and growing demand for this superior yacht.

A winning Combination equates to a seasoned award winning builder and an experienced owner with a long history building, designing and maintaining commercial vessels as well as his own personal yachts. This magic combination teamed up to build this incredible Yacht.

“Jackpot II” is one of the highly sought after Marlow Explorer 70 E Command Bridge’s. The perfect cruising machine for today’s yachting adventurer: long range, express speeds in comfort, luxurious style in a safe and seaworthy yacht, demonstrating the removal of "compromise" from the equation of owning the perfect yacht.

In a sentence, Jackpot II is a traditionally styled work of art as well as a high tech, high performance, ocean going adventure yacht.

Flexibility is essential in today’s cruising environments. With “Jackpot II “ you have all the benefits of trawler speed economics along with the ability to run with the sport fish boys if you want to go fast.

This very capable offshore cruising yacht is powered with CAT C18’s, delivering a top speed of just over 25 Knots, and cruising speed at 23 knots, yet sips just 9 GPH at 8.3 knots giving her a displacement speed range of over 1,800 miles. Her CE certification is by Lloyd's Register Quality Assurance for Category A (Ocean). With impeccable level of finish throughout and built to the strictest standards, “Jackpot II” is filled with the notable touches of quality and performance that brand these Marlow Explorer yachts “Simply the Best”.

## Measurements

---

Cruising Speed:	23 kn	Displacement:	89000
Max Speed:	25 kn		lb
LOA:	74 ft 10 in	Fuel Tanks Capacity:	1800
LWL:	66 ft		gal
Beam:	18 ft 4 in	Fresh Water Tanks Capacity:	450
Max Draft:	4 ft 6 in		gal
		Holding Tank Capacity:	120
			gal

## Propulsion

---

Engine Make:	Caterpillar	Engine Hours:	600
Engine Model:	C-18, 2x1015hp	Total Power:	2030 hp

## First Impressions

---

A winning Combination equates to a seasoned award winning builder and an experienced owner with a long history building, designing and maintaining commercial vessels as well as his own personal yachts. This magic combination teamed up to build this incredible Yacht.

“Jackpot II” is a the highly sought after Marlow Explorer 70 E Command Bridge. The perfect cruising machine for today’s yachting adventurer: long range, express speeds in comfort, luxurious style in a safe and seaworthy yacht, demonstrating the removal of "compromise" from the equation of owning the perfect yacht.

In a sentence, Jackpot II is a traditionally styled work of art as well as a high tech, high performance, ocean going adventure yacht.

## Aft Deck / Cockpit

---

The cockpit has uninterrupted teak decks and a built in seating area. This yacht has an extended boat deck that provides full overhead protection from rain and sun in the cockpit. The salon door is very large and when it is open the cockpit and salon become one entertaining area. Transom doors lead to the oversize swim platform. The swim platform leads to a transom door accessing the engine room and crew quarters. Custom hawse pipes are in the corner of the transom with rollers and rope storage lockers.

- Built in seating with storage under
- Molded FRP stairway to flybridge and boat deck.
- Twin transom doors with steps to the integrated swim platform.
- Aft deck speakers integrated to the flybridge speakers
- Crew access cabinet

## Salon

---

The salon is very spacious. The tinted windows let in just the right amount of light and have custom-made teak blinds. Salon accommodations include a L shaped built-in settee and entertainment center with a large pop-up LCD TV and Bose Surround Sound. A full-size bar is on the starboard side of the forward salon area.

- L-shaped settee
- Custom made teak table
- 43" Pioneer plasma TV
- Wet bar, hidden sink
- Overhead handrail
- Sub Zero wine cooler
- Sub Zero clear ice machine
- Teak and Holly flooring over fiberglass composite sole
- 24V Italian and Danish lighting

## Galley

---

The galley is centrally located on the main deck forward and up 3 steps from the salon. An opening under the aft galley cabinets allows visibility right through to the salon and aft deck. The galley counters are Black Galaxy granite and the under-mounted sink is on the forward side of the galley counter so you are looking out the front windows of the yacht when standing at the sink. The Dacor cooktop on the port side of the U-shaped counter and has removable stainless steel sea rails to keep pots from moving about on the smooth glass cooktop. The up right refrigerator and freezer are on the aft end of the galley right next to the cook top. The galley has generous cabinet space with louvered doors to keep the cabinets well ventilated.

- Teak and Holly flooring
- Full size side by side refrigerator / freezer
- Louvered cabinets
- Fisher-Paykel dishwasher
- Granite countertops
- Dacor electric cooktop
- Storage cabinets and drawers
- Franke double sink w/tap
- Sharp microwave/convection oven
- Tube light under counter
- Grohe faucet
- Drinking water faucet, separate supply
- Spice racks
- Exhaust blower over cooktop
- Cutting boards/sink covers
- Appliance storage locker in countertop aft

## Pilothouse / Dining

---

The main deck pilothouse area is very spacious. Instead of a large lower helm station, which is unnecessary in a command bridge model, a large seating area with teak table is located aft. The galley is forward of the dining area and is open to the salon.

- Large dining table with built in seating
- Teak and holly flooring
- 24V Italian and Danish lighting
- Chart locker
- Flush FRP articulating pilothouse doors
- Teak valance board w/tube light
- S/S post see-through stairs to bridge
- Lighted stairway to forward cabins

## Engines & Mechanical

---

The engine room has full standing headroom, access to every piece of equipment and machinery without gymnastics, and a convenient and handsome workbench. It is accessed through a watertight door with a viewing port. Air conditioned and with cables neatly bundled, valves clearly labeled, plumbing color coded, gauges at eye level and plenty of light to work make this an ideal "boys toy room".

The sea chest is at the forward end of the engine room and provides sea water to the engines, generator, air-conditioning, and all the other items on the yacht that need sea water for cooling. Each item has it's own shut-off valve for servicing. The two 900 gallon fuel tanks are just in front of the forward engine room bulkhead. This is the center of buoyancy of the yacht so your running angle will not change as your fuel level changes. The fuel tanks also provide an additional layer of soundproofing between the engines and the cabins forward.

- Pressure fresh water faucet
- Aquadrive Centa flexible drive couplings
- Soft engine mounts
- Proprietary sea chest water intake system
- Drive coupling covers, FRP
- PSR pressure fresh water system
- Sea Chest inspection and cleanout port
- PJR pressure sea water system
- Seacocks on all seawater supply lines

- 2 @ 20KW Northern Lights Generator
- PJR drinking water pump
- Water heater, 30 gal stainless steel
- Proprietary fiberglass insulation blanket
- FRP fuel tanks with sight gauges
- Engine room lead/foam sound insulation
- Engine room blowers 220V high volume
- Salt water pump
- S/S water tanks w/sight gauges
- Racor fuel water separators, dual with gauge
- FRP holding tank plumbed - 120g black / 120g gray
- Engine room vent blowers 2x12V, 24V
- Dockside or overboard discharge
- Engine isolation switches
- Common drainage system for sink, deck, shower and bilge
- Sea Recovery Aqua Whisper water maker
- Fresh water outlet with hose for engines & generator
- Engine-Generator-Gears oil change system
- 304 Stainless domestic water tanks
- Heavy duty manual bilge pump
- Under water exhaust system
- High water bilge alarm in engine room
- 24V overhead lights, waterproof
- Dripless engine shaft seal logs
- FRP gray and black water tanks
- Heavy duty vacuum pumps for gray and black water
- Smooth finish gelcoated bilges
- HD watertight engine room door with inspection port
- Heavy Duty exhaust hose clamps
- High Temperature silicone exhaust hoses
- Common drainage system for all discharges
- Proprietary Air inlet system, baffled
- Polished stainless engine beds, risers and fuel manifolds

- 24 volt bilge blowers
- Engine lube oil tank
- FRP fuel tanks
- Color coded copper piping for fuel, water and hydraulic system
- DC outlet
- AC outlet
- Four 3700 GPH bilge pumps with auto & manual switch
- Varnished teak bilge grating
- 240V fluorescent lighting

## Command Bridge

---

The top deck houses a large and functional Command Bridge, allowing for cruising in all types of weather. The Bridge boasts a 360 degree view. It has twin Stidd helm chairs, a refrigerator, sink combo cabinet and a giant settee with table. Twin water tight sliding side doors open while underway for those cool Bahama breezes.

## Electronics

---

- Furuno MFDBB 3D Processor
- Furuno DRS12A 12 KW Radar Scanner
- 2 Furuno MU170 C 17 in Monitors
- Furuno AIS FA-30
- Furuno BBFF3 Black Box Sounder
- Furuno 50/200 Transducer
- KVH Sat TC M-5
- FLIR Nav II
- Simrad AP-25/RPU-160
- 2 Icom 604 VHF Radio's
- Simrad IS-15 Depth/Speed/Temp
- Syrens WIFI
- Charles Intercom

## Deck

---

Highly polished, finest quality stainless steel is used throughout every Marlow Explorer. We have designed a beautiful and functional oval handrail for more secure gripping and more substantial good looks. Our ship's bells, door handles and steering wheel centers are all laser engraved with the Marlow Explorer logo. The water fills are self-keyed for convenience and practicality.

The main deck includes a Portuguese bridge, teak decks and ship quality ground tackle. Fuel, water, waste and power cords are accessible from both sides of the yacht.

## Exterior Hardware and Fittings

---

- Hardware S/S or chromed brass
- Hidden fueling ports with anti-spill catch basin
- 1.375" stanchions main deck
- S/S rudders
- S/S cleats & hawse holes
- Strut keels
- Aquamet 22 propeller shafting
- S/S Portholes heavy duty 316L S/S
- Custom CNC cut Nibral propellers, "S" class
- Fresh water washdown, cockpit
- Bronze through-hull fittings
- Spotlight with remote at each helm
- Custom stainless anchor light and pennant bracket
- Windlass - Lofrans Titan B
- Teak steering wheel
- Super Duty custom trim tabs
- Teak bow and stern staffs
- Sea water washdown, forward deck, high volume
- Exalto heavy duty windshield wipers and washers
- Proprietary stanchion base mounting system
- 2 Stidd Helm seats on command bridge
- Stereo-CD player on bridge



## Master Stateroom

---

The full beam owner's suite is just forward of the engine room amidship, and is separated from the engine room by insulated bulkhead and fuel tanks. The bed is centerline and there are cherry nightstands on each side of the bed with beveled glass mirrors and reading lamps above. The his and hers head is aft of the bedroom and has an adjoining shower, 2 VacuFlush toilets along with his and hers Sinks. There are five hanging lockers and lots of drawer space. The TV is on the forward wall of the stateroom. Six opening port lights let plenty of light in.

- King sized berth
- SAT TV w/Receiver
- 32" Sharp Flat Screen TV
- Bureau w/chest of drawers
- Cedar lined full height hanging lockers
- Drawers under bunk with auto lighting
- Mirrors
- Tube light beneath and behind berth
- Vanity
- Large head with stall shower
- 24V Italian and Danish lighting
- Bose CD/Stereo & Sound System
- Linen closet
- Heavy duty 316L portlights with screens
- Access to machinery storage areas

## VIP Stateroom

---

The VIP Suite is forward. The Stateroom has two large hanging lockers and six large storage drawers. The head is on the starboard side and has a full size shower.

- King size bed
- Cedar lined storage lockers
- Reading lamps
- CD Stereo with built in speakers
- 6 large overhead drawers

- 15" LCD TV
- Deck hatch for access to bilge and bow thruster

## Guest Stateroom

---

The guest room has twin bunks with a desk and cabinets. It also has a full size washer and dryer. The folding solid doors open the room up to the adjoining companionway.

## Crew Quarters

---

The full beam crew quarters are aft of the engine room and feature a double bunk, night stand, hanging lockers and refrigerator. The crew has their own head with shower. There is a separate entrance in the cockpit so the crew does not need to enter the salon to access their quarters. There is also a full height transom door that provides access while not at sea. This door takes you through the storage area and crew quarters to the engine room.

## Tender

---

2007 Boston Whaler 130 Sport w/Standard Options w/2007 Mercury 40 ELPT 4S

## Additional Salesperson's Remarks

---

This yacht is constructed with the most modern materials and techniques providing more strength with less weight than possible with conventional technology. The use of Kevlar, modified epoxy resins, and high density core materials allows the Marlow Explorer to be stronger than the heaviest of hulls at a fraction of the weight. Modern honeycomb and structural foam is used on every counter, cabinet and sole in the yacht. Even if speed is not a driving factor for you, the increased range and reduced fuel costs will be of great benefit.

- Molded FRP flush window frames
- Proprietary High Pressure lamination system, vacuum bagged
- Engineered sandwich construction throughout
- Laminated and tempered window glass
- Dupont Kevlar lamination fabrics
- Bow Thruster remote control
- Stern Thruster remote control
- Non-skid FRP decks, main & flybridge
- Screens on all opening windows, hatches and ports
- Sandwich bulkhead, floors, stringers construction
- Deck Lights 24V
- Burmese Teak weather decks

- Red night lights on flying bridge
- Heavy duty concealed swim ladder
- Heavy duty low profile 316L SS Hatches (6)
- Velocijet Strut Keels
- Sliding hatch and door to bridge from pilothouse
- Owner aboard logo lighting
- Bulwark doors and gates P&S
- Heavy duty 316L solid stainless rubrail
- S/S ladder with teak steps, cockpit to bridge
- Portuguese Bridge deck storage lockers
- Cockpit deck lockers, FRP
- Cockpit controls, sink and fire system
- Molded FB seating with dry storage under
- Engine room access from cockpit
- Teak coaming
- Oval Stainless Steel Handrails
- Sliding doors, P&S pilothouse, aft salon with lock
- FRP bow pulpit with S/S anchor roller
- Transom door
- FRP swim platform with teak inlay

Jackpot II is a stellar example of Marlow quality. She has been captain maintained from her inception with an open check book. She has been serviced regularly since new and all her service records are up to date and on board.

## Exclusions

---

- Wall art and sculptures

## Disclaimer

---

The Company offers the details of this vessel in good faith but cannot guarantee or warrant the accuracy of this information nor warrant the condition of the vessel. A buyer should instruct his agents, or his surveyors, to investigate such details as the buyer desires validated. This vessel is offered subject to prior sale, price change, or withdrawal without notice.

# Photos

---



Jackpot II



Salon Looking Forward



Salon Bar



Galley Forward



Galley Dinette & Setee



Command Bridge



Full Beam Master Stateroom



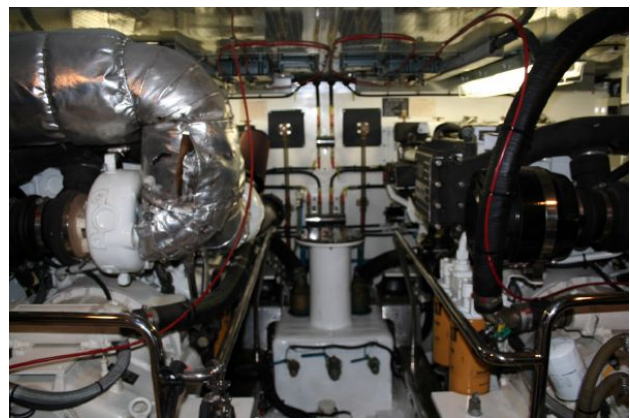
Master Stateroom Vanity



Master Stateroom Head



VIP Stateroom



Engine Room





Laundry



Side Deck



Running