



Cabo Yachts 35 Flybridge w/ Tower – 35 Cabo

Year:	1999	Price:	\$ 146,950
Make:	Cabo Yachts	Location:	Sarasota, FL, USA
Model:	35 Flybridge w/ Tower	Engine Make:	Caterpillars (2x375hp)
		Engine Model:	3208
		Hull Material:	Fiberglass

35 Cabo

Price Reduced!!

Owner Wants Offers

When it comes to interior appointments and craftsmanship, the 35 Flybridge goes head to head with the finest yachts. The teak woodwork is elegant and durable.

Measurements

LOA:	35 ft	Displacement:	20000 lb
Beam:	13 ft	Fuel Tanks Capacity:	400 gal
Max Draft:	2 ft 6 in	Fresh Water Tanks Capacity:	100 gal

Propulsion

Number of Engines:	2	Engine Hours:	1825
Engine Make:	Caterpillars (2x375hp)	Total Power:	750 hp
Engine Model:	3208		

Salon

The salon is quite spacious, has upscale teakwood, coordinating carpeting, window treatments and well laid out. The salon sofa seats six and converts to a double berth.

Galley

Located up and forward to the port, the galley features Corian countertops, a twin burner cook top, a large refrigerator and a convection/microwave oven to meet the needs of the discerning chef. Plenty of cabinets and drawers for storage.

Accommodations

Master Stateroom

Understated luxury continues in the master stateroom with large centerline double island berth. Dual hanging lockers, drawer storage, port and starboard storage lockers, an overhead ventilation hatch and TV.

Guest Stateroom

Is located on the cabin deck to port. Features two single over/under berths. Drawer storage and opening ports

Head

Located across the companionway from the guest stateroom. A spacious head with shower stall with seat, vanity, sink, toilet, mirror, storage lockers and opening port.

Deck / Cockpit / Flybridge

Made by fisherman for fisherman, the 35 Flybridge's offshore prowess is profession grade. Accommodating up to four stand-up anglers, the cockpit measures an astounding 130 square feet - unsurpassed acreage in a 35-footer. Padded boisters ring the cockpit for enhanced comfort when bringing big fish to the outward-opening transom door with top gate. Tackle and gear are easily organized in 13 custom-built drawers at two rigging stations.

The 35 Flybridge boasts a pair of large, macerator-equipped fish boxes that lie flush with the sole, as well as both fresh and salt water washdown. To minimize intrusion into the boat's valuable cockpit space, the 40-gallon bait tank is located in the transom, and port and starboard cabinets run nearly the length of the cockpit, providing convenient storage for gaffs and bait nets

- California rails
- Bow pulpit
- Anchor roller
- Rope locker
- Stainless steel bow rails
- Wide side decks
- Large flybridge with hardtop & tower
- Three side enclosures
- Helm/companion pedestal seats
- Forward guest seating
- Bridge ice chest
- Bridge storage lockers
- Large single level cockpit
- Port/starboard cockpit seating
- Molded steps to side decks
- Transom door

Electronics

- Furuno 48 mile radar
- Color sounder
- Northstar 951
- B&G auto pilot
- Engine sync
- VHF

- Remote spot and windlass
- Spreader lights

Electrical

- (3) batteries
- Battery switches
- Battery charger
- Dual 30amp dockside power
- Westerbeke 5kw generator
- 12V receptacle @ helm

Additional Equipment

- Trim tabs
- Anchor windlass
- Remote spotlight
- Spreader lights
- Cockpit courtesy light
- Cockpit bolsters
- AC/heat
- (8) Gunwale rod holders
- (5) rod rocket launchers
- Under Gunwale rode storage
- (2) in deck fish boxes
- tackle lockers
- Pompanette rigging table w/ rod holder
- Double spreader outrigger
- Fresh/salt water washdown

DISCLAIMER

The Company offers the details of this vessel in good faith but cannot guarantee or warrant the accuracy of this information nor warrant the condition of the vessel. A buyer should instruct his agents, or his surveyors, to investigate such details as the buyer desires validated. This vessel is offered subject to prior sale, price change, or withdrawal without notice.

Photos



35 Cabo Running



Salon Entertainment & Seating



Salon Settee



Entertainment Center



Galley



Master Stateroom



Master Stateroom Entertainment



Guest Stateroom



Flybridge Helm



Flybridge Helm Seating



Fish Box

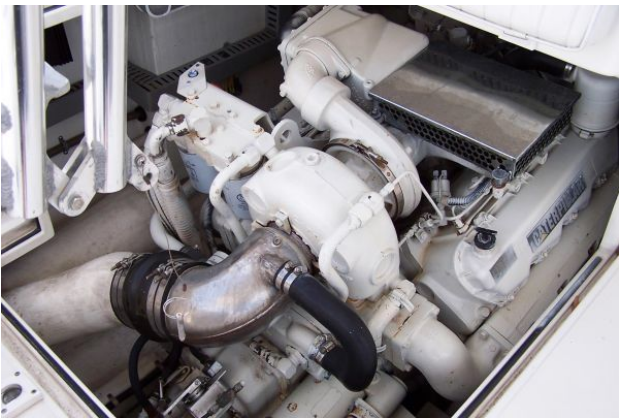




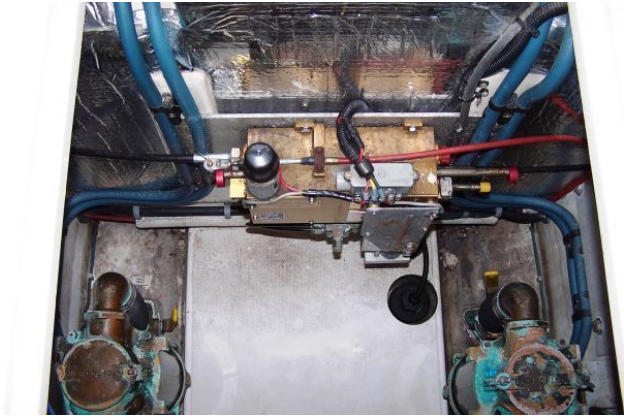
Tower



Electronics



Engine



Westerbeke Generator