



## Grand Banks 42' CLASSIC – Siren's Song

Year:	1995	Price:	\$ 239,500
Make:	Grand Banks	Location:	St. Pete Beach, FL, USA
Model:	42' CLASSIC	Engine Make:	Caterpillars
Builder:	Grand Banks	Engine Model:	3208NA, 2x210hp
Designer:	Ken Smith	Hull Material:	Fiberglass

### Siren's Song

---

*Siren's Song* is on its third ownership. Originally built with twin berths aft, Marlow Marine, in conjunction with the owner, designed and built a totally custom aft cabin with sitting/lounge area - something not found in any other Grand Banks 42 Classic. The additional living space gives this 42' trawler yacht 40% more living area than the standard 42 Classic.

The salon has been refit with newer Ralph Lauren fabrics that add life to the traditional GB42 salon and she has a well equipped lower helm for passages during unfavorable weather conditions.

Lightly used and professionally maintained she offers safe, comfortable and economical cruising for a couple or a family. Whether you are looking for the right boat for the weekend get away for an extended adventure to the islands, on our rivers and lakes making "The Great Loop", or exploring our coastal waters and gunkholes, *Siren's Song* is the perfect choice.

## Measurements

---

Cruising Speed:	10 kn	Displacement:	37400 lb
Max Speed:	13 kn	Fuel Tanks #:	2
LOA:	43 ft 3 in	Fuel Tanks Capacity:	600 gal
LWL:	41 ft 1 in	Fresh Water Tanks #:	1
Beam:	14 ft 1 in	Fresh Water Tanks Capacity:	271 gal
Max Bridge Clearance:	19 ft 3 in		
Min. Draft:	4 ft 2 in		

## Propulsion

---

Number of Engines:	2	Engine Hours:	1317
Engine Make:	Caterpillars	Total Power:	420 hp
Engine Model:	3208NA, 2x210hp		

## Overview

---

The Grand Banks 42 Classic is known for it's comfortable living and cruising accommodations. *Siren's Song* sleeps 4 in two staterooms, each with it's own head and shower. Salon with L-settee, teak drop-leaf table, easy chair, entertainment center with flatscreen TV and stereo. Galley with separate holding plate refrigerator and freezer, microwave, dish lockers, large sink and generous drawer and locker space. Also there are wide walk around side decks with high railings for safety and security. The flybridge is accessed via two steps on the port side. The roomy flybridge can seat twelve for viewing that special sunset.

## Vessel Walkthrough

---

Master stateroom aft with custom queen berth and sitting lounge/office. Elegant teak joinerwork throughout interior. Three reverse cycle heat/air conditioning units cover salon, master and guest staterooms. salon amidship with galley and port and starboard doors. Guest stateroom forward with en suite head.

## Salon

---

The salon has a comfortable and relaxing ambiance. You get a magnificent view of the scenery through the salon windows, which slide open, to allow for fresh ocean breezes. The salon has the galley forward to port and lower helm station to starboard. The optional custom lower bench helm seat for two is a must for the serious cruiser. The starboard door is outboard of the lower helm station and leads to the starboard weather deck. Aft of the helm station is the bar with icemaker, glass and bottle storage, the dining area with L-settee, drop leaf Grand Banks table and one comfortable swivel armed easy chair and Grunert holding plate freezer. The teak is finished in satin low luster, all fabric is beautifully updated to Ralph Lauren and the custom wood blinds protect from the sun and give a warm glow to the salon. All opening windows have screens. The salon is air conditioned and heated.

- Dining area
- Lower helm station
- Galley
- Television - flatscreen
- Sony 10 disc CD player
- A/C 16000 BTU

## Galley

---

The galley offers an outstanding view and strong sense of being part of the group. There is a Grunert holding plate refrigerator and separate Grunert holding plate freezer, each with massive teak doors, superior insulation and gaskets. A Princess electric stove and oven with counter cover are great for meals and entertaining onboard. There is also a large stainless steel sink, a microwave oven and galley exhaust fan, elegant teak storage includes a utility locker, six drawers and a dish locker.

- Grunert holding plate freezer
- Grunert holding plate refrigerator
- Princess 3-burner electric stove with oven
- Princess microwave
- Hot and cold pressure fresh water system
- Water heater
- Sink
- Broan trash compactor

## Lower Helm Station

---

- Tank tender
- Fruro radar FMD 1800
- Raytheon color bottom sounder V8010
- Icom M125 VHF
- Rayline searchlight
- Trim tabs
- Heart inverter
- Northstar 951 GPS
- Raymarine autopilot ST7000+
- Raymarine depth ST60+

## Staterooms

---

### Master Stateroom

Located aft with custom queen berth with two drawers under and sitting lounge/office with corner desk workstation aft to port and extensive built in drawers and large hanging locker storage. Vacu-flush toilet, with cultured marble vanity in head compartment forward to starboard with separate large shower stall. Opening windows with screens in stateroom and head. Companionway hatch and double door to aft deck with screen, teak cabinetry, impeccable joinerwork, parquet sole and trim combine for an elegant interior shielded by custom wood blinds for sun protection.

- Queen berth
- Wood Blinds
- En suite head
- Separate shower compartment
- Teak bookshelves
- Splendide combo washer/dryer behind teak louver doors.

### Guest Stateroom

Abundant teak cabinetry, large overhead hatch with screen, two opening windows with screen. Large hanging locker, drawers, shelves and bins. Adjacent to the stateroom is the forward head with Groco toilet, cultured marble vanity and shower. Controls for forward heat/air conditioning unit

- V-berth

- Hanging locker
- Filler cushion
- Large mirror

## Deck and Hull Equipment

---

Extremely good condition teak decks and varnished caprails and hand rails, redone quarterly. Freshwater wash down forward and aft. Electrical, telephone and TV inlets forward and aft to permit tying up bow or stern in. An enviable anchoring system with Lofrans Tigres chain and rope electric windlass with anchor, 200' 38" BBB chain, 200 3/4" nylon rode. Achilles 11' RIB (1995) with a 1997 Honda 4 stroke 15hp outboard, on chocks on aft trunk cabin deck, lifted with GB mast and boom davit electric lift. Courtesy lights on side decks, spreader lights on upper deck. Standard GB flybridge layout with port and starboard storage seats forward. L-shaped storage lounge aft and teak table, all with Navy Sunbrella covers. Grand Banks optional extras including locking lazarette, extended swim platform, fold down swim ladder and stainless steel handrail around flybridge windshield.

- Aft deck shower
- Bruce 20kg anchor 200' chain
- CQR 45 pound anchor
- Stainless steel bow pulpit
- Fresh water wash down system foredeck
- Air horn
- Fenders
- Complete bottom job and all new zincs May 2011
- New trim tabs pumps and hydraulic hoses
- All new waste tank odor free safe hoses
- Shore telephone and cable TV connections at bow and stern

## Engine Room

---

Neat and orderly, well lit, good access outboard of engines. Fuel tanks in excellent condition. New dual Raycor primary engine fuel filters. New fuel tank cross connects. Fuel/water separators.

- Macerator pump and Y-valves
- 3 Air conditioners, reverse cycle
- V-berth 16000 BTU
- Salon 16000 BTU
- Aft cabin 12000 BTU
- Upper and lower engine controls
- Glendenning engine synchronizers - dual station
- Raw water sea strainers
- Hydraulic steering
- SeaRecovery 350 GPD
- 50 Gallon holding tank with gauge
- Bennett trim tabs
- 2 bilge blowers
- Dual Raycor primary engine fuel filters
- 3 Bilge pumps
- Fire extinguishers
- Onan Generator 8kW

## Additional Salesman Remarks

---

*Siren's Song* has a special layout in the aft cabin which the new cruising couple will appreciate. From the updated fabrics to the full teak interior, port and starboard salon doors open to wide side decks. She truly has all the comforts and features, to make this an ideal home away from home. *Siren's Song* has been professionally maintained for reliable operation for many years to come.

## DISCLAIMER

---

The Company offers the details of this vessel in good faith but cannot guarantee or warrant the accuracy of this information nor warrant the condition of the vessel. A buyer should instruct his agents, or his surveyors, to investigate such details as the buyer desires validated. This vessel is offered subject to prior sale, price change, or withdrawal without notice.

# Photos

---



Siren's Song



Salon



Salon



Salon



Salon Settee



Galley





Galley /Helm Station



Helm Station



Master Stateroom



Master Stateroom Office Area



Master Stateroom Lounge/Dressing Area



Master Stateroom Hanging Lockers





Washer/Dryer Combo Cabinet



Spelndide Washer/Dryer Combo



VIP Stateroom



VIP Bookshelf



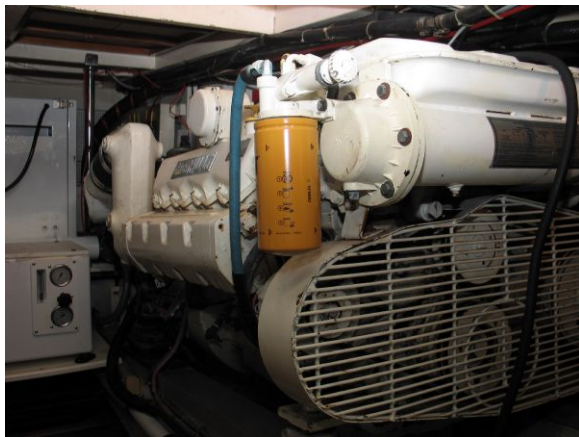
VIP Head



Flybridge Helm



Engine Room



Port Engine



Starboard Engine

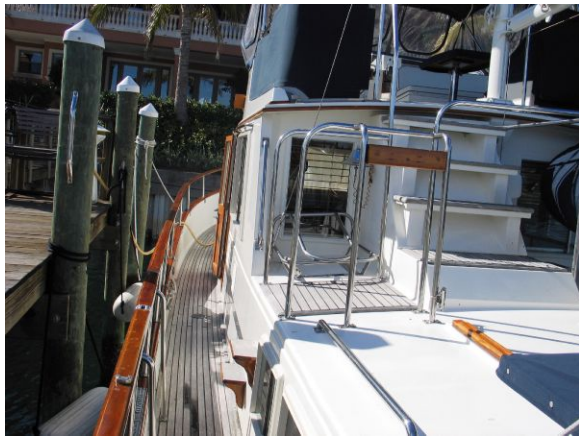


Water Maker



Aft Deck w/ Dinghy





Port Side Deck



Starboard Side Deck



Starboard - Dockside



Port - Dockside



Starboard Side View



Port Side View



Starboard Stern



Port Stern