



## Marlow Explorer 65C – Reel Class II

<b>Year:</b> 2003	<b>Price:</b> USD 1,395,000
<b>Make:</b> Marlow Explorer	<b>Location:</b> Snead Island, FL, USA
<b>Model:</b> 65C	<b>Engine Make:</b> Caterpillar (2)
<b>Builder:</b> Marlow Yachts LTD	<b>Engine Model:</b> Twin CAT 3406E
<b>Designer:</b> Marlow Design Team	<b>Hull Material:</b> Composite

### Reel Class II

---

REEL CLASS II has been Captain maintained for a meticulous owner. The 800 HP 3406E Caterpillar Engines are covered under Caterpillar's Platinum Plus warranty. The engines and generators have just been serviced and she is ready to cruise. REEL CLASS II is at home making fast passages at 18 knots or slow cruising at an efficient 8-10 knots. She is a great sea boat with twin keels that fully protect the propellers. She is also stabilized.

The three staterooms with three heads makes her a great family boat. Her separate crew quarters are aft of the engine room with access from the aft end of the salon making this a nice overflow guest quarters for the owner operator.

The Portuguese bridge and high bulwarks make this a very safe vessel underway. Wide covered side decks, large cleats and oversize hawse pipes make line handling safe and simple. The hard top and full enclosure provide protection from the elements on rough days and will keep the flybridge seating out of the sun and rain. She features twin anchors and a Novurania dinghy with a 60hp Yamaha 4 stroke outboard engine.

She has great outdoor spaces for relaxing or entertaining. The Bow seating is a favorite spot to watch the world go by when coastal cruising and is also a great spot at anchor. The cockpit is a great place for dinner with its built in bench seat and beautiful teak table and the addition of a few chairs. You will find the flybridge is the best spot in a marina offering privacy and a great view.

There are very good Captains logs and full service records for the vessel so you will have no doubt she has been well maintained.

## Measurements

---

Cruising Speed:	18 kn	Displacement:	77000 lb
Max Speed:	22 kn	Fuel Tanks Capacity:	1600 gal
LOA:	74 ft	Fresh Water Tanks Capacity:	475 gal
LWL:	60 ft 2 in	Holding Tank Capacity:	120 gal
Beam:	18 ft 4 in	Number of Cabins:	3
Min. Draft:	4 ft 6 in	Number of Heads:	3

## Propulsion

---

Number of Engines:	2	Total Power:	1600 hp
Engine Make:	Caterpillar (2)		
Engine Model:	Twin CAT 3406E		

## Salon

---

The salon is perfect for entertaining. A large, comfortable U-shaped seating area is opposite the large flat screen TV, which is on a lift mechanism so it can be hidden away when not in use. Leather club chairs that fold out to comfortable recliners on each side of the TV cabinet provide additional salon seating. There is a large salon table that is on a gas lift allowing you to adjust it from coffee table height up to a good position to dine. Forward you'll find a full wet bar, full size wine cooler, sink and lots of storage. There is also a private stairwell leading to the master stateroom at the forward end of the salon. The double salon doors aft can be opened on nice days providing wonderful fresh air throughout the main deck. Immediately to port of the aft double salon doors you'll find a convenient inside stairwell leading to the crew cabin and engine room below.

One of the best features of the salon is the ability to see up through the galley and pilothouse. This open plan makes the salon feel much larger and you will not get that closed in feeling you get on many boats.

- Teak blinds
- 24V Danish lighting
- Rope accent lighting
- Brass clock & barometer
- Teak & holly floor, sating finish
- Large LED flatscreen TV
- Custom bookcase with painted display area
- Large storage cabinets
- Custom built ottomans covered to match settee

## Galley

---

The Galley is up in the Pilothouse and with its unobstructed views of the horizon, you'll find it to be a stable and comfortable workspace while at sea. This is also great for those who are standing watch at the lower helm because the galley is just a few steps away. The Galley features top of the line appliances including two SubZero refrigerator drawers, two SubZero freezer drawers, a full size four burner Dacor cook top, full size Dacor oven, microwave oven, dishwasher, and a Kitchen Aid trash compactor. The combined Pilothouse/Galley area is a favorite spot when underway. This superb layout will have you running the boat from the lower helm whenever the weather outside is less than perfect.

- White solid surface countertops with teak fiddles
- Franke heavy stainless steel sink
- Grohe faucet
- Instant hot water spigot supplied by yacht's seperate drinking water system
- Dacor smooth surface 4 burner cooktop with sea rails
- Sharp Carousel microwave oven
- Dacor full size conventional/convection oven
- 2 Sub Zero refrigerator drawers
- 2 Sub Zero freezer drawers
- Fisher Paykel drawer style dishwasher
- Exhaust fan over cooktop/oven
- Kitchen Aid trash compactor
- Large overhead cabinets
- In counter bread warmer

- Numerous drawers for storage

## Pilothouse / Lower helm

---

The Pilothouse is far enough forward and high enough off the water for this to be a safe and comfortable station to pilot the Yacht. Many find docking is actually easier from the lower station as you can see all the way through the galley and out to the stern of the vessel. The upper and lower helm stations are fully equipped with electronics. Just to Port of the helm chair there is a nice teak table and seating area for 5. You will find your family and friends will be here when you are underway on days when it is more pleasant to run from inside. This pilothouse will quickly convert those that usually run from the flybridge in any weather. The Stidd Helm chair is very comfortable and is adjustable in every direction. Overhead you will find the status of the yacht's systems including the monitoring of all tanks, the voltage of all the yacht's batteries, LED indicators of any pump that is running, breakers for all the electronics and bilge pumps. The stabilizer control is also here for easy access. The console in front of you displays the chart plotter, radar and other related navigation and engine display information. The yacht's wheel is truly a work of art – made from stainless steel, wrapped in teak and accented with ebony. Another reason you will quickly find this a comfortable station is its proximity to the galley that is just a few steps away.

- Stairs below to VIP and port guest staterooms
- Stairs up to flybridge
- Stereo with CD changer
- Chart drawer
- Custom built storage cabinet aft of helm chair
- Overhead hatches with screens (opening)
- Port & starboard pilothouse doors
- Stidd helm chair with polished stainless steel base
- Air handler & thermostat for pilothouse
- Overhead electronics breakers
- Fireboy fire suppression system control panel
- Tank tender system to monitor all tanks (fresh water, fuel, grey water, black water, drinking water)
- Ships systems indicator displays, pump, light, temperature warning
- Xantrex inverter remote control
- Naiad stabilizer controls
- Bilge and sump pump control systems
- Ships battery voltage monitor
- Compass
- Glendinning engine controls

- CAT engine displays
- LCD TV display for deck and engine room cameras
- Furuno radar
- Northstar 6100i chart plotter
- Furuno 582 depth machine
- Simrad auto pilot
- Simrad IS15 wind indicator
- Simrad repeater
- Standard Horizon VHF radio
- Bow & stern thruster controls
- Wiper controls and wash system
- Trim tab controls

## Master Stateroom

---

REEL CLASS II's full beam master stateroom features a king berth, twin built in night stands and sufficient locker and drawer space to stow everything you might need for extended cruising. The ensuite master head features twin sinks, a nice vanity, private stall shower and lots of counter space. There is a very nice private office area aft of the stateroom that also houses a full size washer and dryer.

- Private entrance from Salon
- Athwartship king size bed with 3 opening port lights above
- His and Hers nightstands with reading lights
- 8 storage drawers under the bed and large center storage area for oversize items
- 7 feet of cedar lined, full height, hanging lockers
- 2 chests of drawers
- Private office area with laundry center including full size Asko washer/dryer
- Sharp LED TV with built in DVD player
- CD radio with built in overhead speakers
- Accent rope lighting
- Teak & Holly sole with satin finish
- Separate a/c air handler with separate center for this stateroom

## Master Head

---

- His and Hers sink areas with storage
- 3 opening port lights
- Large walk in shower
- Vacuflush head
- Access to 2nd head when port guest stateroom is not in use
- Numerous storage drawers and cabinets
- Sliding pocket door to free up space
- Large pop up vanity with stool
- Head fan
- Back water level indicator
- Bright overhead lights and mirrored ceiling

## VIP Stateroom

---

The VIP stateroom features a queen size bed, cedar lined hanging lockers, ample drawer and cabinet space and its own ensuite head with sink, vanity and large stall shower. Large overhead hatches provide plenty of light and fresh air.

- 2 Hanging lockers, cedar lined
- 4 Overhead storage cabinets
- 6 Large storage drawers
- Queen size bed
- 2 Reading lamps
- 2 Large opening overhead hatches with screens
- Separate A/C thermostat
- Flat screen TV with dedicated satellite TV receiver wiring

## VIP Head

---

- Large shower stall with Grohe fixture
- Ceramic sink with white corian counters and Grohe faucet
- VacuFlush head
- Opening portlight with screen
- Mirrored ceiling

- Storage cabinets and drawers
- Exhaust fan

## Port Guest Stateroom

---

The Port guest stateroom features offset twin bunks and a private head. There are two large hanging lockers, storage drawers, and bookshelves. Natural light and fresh air is provided by two opening port lights in the stateroom and one in the head. The head for this stateroom can also be accessed from the master stateroom giving the owners the option of his and her heads when the guest stateroom is not in use otherwise.

## Crew Cabin

---

The crew cabin has bunks for 2 and a nice private head. There is a small refrigerator, separate air conditioner control, storage cabinets, drawers and a flat screen TV.

## Flybridge

---

The Flybridge has a full hard top and lots of seating for family and friends behind the two Stidd helm chairs. There is another beverage refrigerator, eliminating the need to go below for drinks. There is a sink, and lots of storage space here as well, perfect for entertaining. There is a nice set of teak deck chairs that are comfortable for use on the dinghy deck or you can take them down below for use in the cockpit.

- Custom built hardtop
- 2 Oyster white Stidd helm chairs
- Twin seating areas for 6 with blue ultrasuede cushions
- Custom pad for bridge (Great place to sit when cruising)
- New Garmin chart plotter
- Furuno radar
- Furuno depth sounder
- Standard Horizon VHF
- Simrad wind, speed, depth instruments
- Glendinning electric controls
- Bow and stern thruster controls
- CAT engine displays
- Naiad stabilizer controls
- Spotlight controls
- Remote mic to lower helm VHF
- Intercom to pilothouse and engine room

- Sony stereo
- 110V GFI outlet
- Life ring
- Full enclosure

## Boat Deck Aft of Flybridge

---

- Sink
- Refrigerator
- Large ice chest
- 1600 lb. Davit
- Zodiac life raft
- Novurania 15' RIB with 60hp Yamaha 4 stroke
- EPIRB
- LED lights mounted on aft forward of hard top
- Stairs to aft deck with sliding hatch to close off
- Stairs to pilothouse

## Cockpit

---

The cockpit on Reel Class II is a perfect spot at anchor or in a Marina. The table will seat 6 for dinner with a combination of the built in bench seat and a few deck chairs. The custom built awning will keep you out of the sun and rain.

- Teak cockpit table with room for six
- Aft bench seat
- 4 Teak chairs
- Gaggenau electric grill
- Sink
- Aft engine controls
- Aft Thruster controls
- 2 In deck storage wells for fenders and lines
- 2 Deck prisms for natural light in crew cabin
- 5 Rod holders
- Extended custom cockpit awning
- Cockpit lights
- Aft deck stereo speakers

- 110V GFI waterproof outlet
- Stairs to flybridge
- Aft floodlights
- Cockpit camera, displays at upper and lower helm

## Electronics

---

Reel Class II has a full suite of electronics for navigation, communications, and entertainment. Both helm stations are fully functional. She is wired for 4 separate satellite TV receivers and has a new WI FI system to provide everyone on the Yacht the ability to connect when there is service available.

## Engine Room

---

As is the case with all Marlow's, the air conditioned engine room, with its full standing headroom and easy access to all components, is a delight to work in.

- (2) 3406E Caterpillar engine
- (2) ZF 350A transmissions
- New exhaust blankets
- Aquadrive shaft couplings
- Intercom to flybridge and pilothouse
- Sea Chest
- Twin Raycor filters for each engine and generator (8 total)
- (2) Auxiliary fuel tanks plumbed to main tanks
- 12KW Northern Lights generator with custom clear lexan sound shield
- 20KW Northern Lights generator with customer clear lexan should shield
- Underwater exhaust
- Sea Recovery 900 GPD watermaker
- Charles shore boost power conditioner for shore power
- Tool box with complement of tools
- 110V & 24V lighting
- 220V & 24V engine room fans
- Chilled water ac/heat system
- Sea Chest to supply all salt water
- 24V salt water wash down pump
- Generator air water separators
- Fire Boy fire suppression system

- Stainless steel safety rails
- Spare parts and filters
- Fuel sight tubes
- Fresh water wash down faucet & hose
- 25 gallon oil lube tank
- Naiad stabilizer system
- Power steering pumps on both engines
- Dripless shaft seals

## **DISCLAIMER**

---

The Company offers the details of this vessel in good faith but cannot guarantee or warrant the accuracy of this information nor warrant the condition of the vessel. A buyer should instruct his agents, or his surveyors, to investigate such details as the buyer desires validated. This vessel is offered subject to prior sale, price change, or withdrawal without notice.

# Photos

---



Reel Class II



Salon



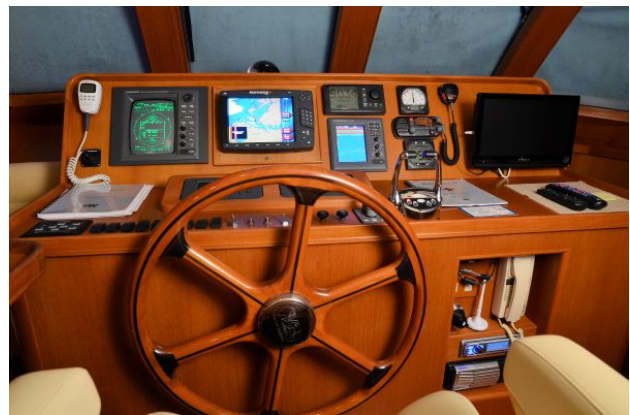
Salon



Galley



Galley



Pilothouse Helm Station



Pilothouse & Seating



Master Stateroom



Master Stateroom Office Area



Master Head



VIP Stateroom



Guest Stateroom



VIP Head



Crew Quarters



Flybridge



Flybridge Helm



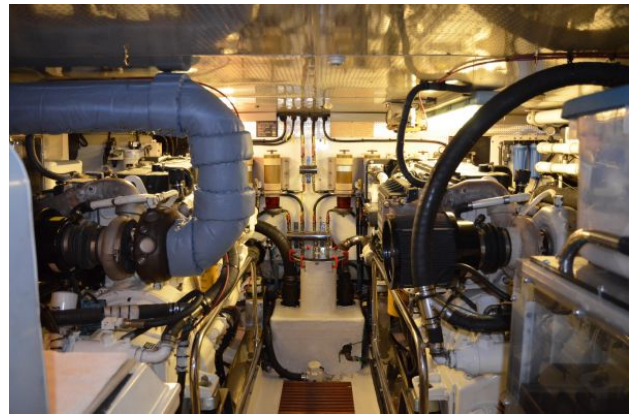
Flybridge Seating



Flybridge Seating



Aft Deck



Engine Room



Engine Room



Sea Recovery



Generator





Bow Profile



Running View



Bow Running View

