



## Grand Banks 46 Europa – Maria

<b>Year:</b> 1996	<b>Price:</b> USD 325,000
<b>Make:</b> Grand Banks	<b>Location:</b> Snead Island, FL, USA
<b>Model:</b> 46 Europa	<b>Engine Make:</b> Caterpillar
<b>Builder:</b> Grand Banks	<b>Engine Model:</b> 3116TA, 2x350hp
	<b>Hull Material:</b> Fiberglass

### Maria

MARIA is a meticulously maintained Grand Banks 46 Europa which has been operated by an experienced cruiser for the last ten years. She looks half her age. The 46 Grand Banks Europa is one of the most popular models the company has ever produced. One of the reasons the "Europa" is so popular is her single level living area. This particular 46 was "CUSTOM" made for her original owner and loved by her second owner, who has moved up to a 52' Grand Banks Europa. This is not your ordinary Grand Banks and she has been maintained to the highest standards by a meticulous owner. This is a well thought out boat for a cruising couple. The galley has been located aft to starboard and is the U-shaped type that is so popular in the 2

stateroom Grand Banks 46 Classic. If you have been looking...now is the time to look at this one of a kind boat. She is priced right and ready to go! Like all Grand Banks, her full teak interior is a masterpiece of workmanship and finish. Her flybridge, which extends over the aft deck and her sidedecks, offers protection from the sun and rain. Her large cabin windows provide abundant natural light and fantastic ventilation. This is the perfect boat for you to cruise with. Her owner has moved up to his new boat.....he is anxious to SELL.

**SHE IS IN EXCELLENT CONDITION!!!!**

**EXTREMELY MOTIVATED.....EXTRA CLEAN AND TURN KEY.**

## Measurements

---

Cruising Speed:	14 kn	Displacement:	39000
Max Speed:	16 kn		lb
LOA:	46 ft	Fuel Tanks Capacity:	600
LWL:	44 ft 3 in		gal
Beam:	14 ft 9 in	Fresh Water Tanks Capacity:	300
Max Draft:	4 ft 5 in		gal

## Propulsion

---

Number of Engines:	2	Engine Hours:	2550
Engine Make:	Caterpillar	Total Power:	700 hp
Engine Model:	3116TA, 2x350hp		

## Vessel Walkthrough

---

The Grand Banks 46 Europa is known for its comfortable living and cruising accommodations. The salon with dining area and desk, U-shaped galley and covered aft deck are all on one level offering extensive living and entertaining area without the need to go up and down stairs. Wide walk around side decks and foredeck have high railings for safety and security. Forward are the master and guest staterooms with adjacent heads. The flybridge is accessed via an inclined ladder and provides seating for eight.

## Salon

---

TV/Stereo, seating for at least six. MARIA has a custom salon with gourmet galley in the starboard aft corner vs forward which results in a much more functional arrangement. She also has a L-shaped settee forward with a beautiful Hi-Lo dining table.

## Master Stateroom

---

The Master Stateroom is forward. Queen bed with ensuite head and separate stall shower. Large hanging locker, custom bureaus. This room is larger than the standard 46 Europa.

## Guest Stateroom

---

Below forward to port. Upper and lower bunks, twin berths. A large hanging locker and additional drawers.

## Galley

---

MARIA's galley is up and set up for a cook to be able to enjoy the preparation of meals. The galley is U-shaped, located aft in the salon adjacent to the aft deck where there is a teak table.

From the double stacked refrigerators to the under counter freezer, the over counter microwave, large sinks, glass racks, extra storage, fold up counter extension and custom air conditioning this galley is special.

- Pressure water system
- Deep freezer
- Grunert refrigerator with freezer
- Seaward 3 burner electric stove
- Double sink
- Microwave oven
- Water heater

## Laundry

---

The washer and dryer is in its own locker with linen storage above on the port side of the companionway just before you enter the forward stateroom. Directly opposite is a large full length pantry and broom closet, something needed but not usually found on boats of this size.

## Additional Features

---

Desk compartment in salon, expanded hanging locker space in master, teak inclined ladder to bridge, full enclosure on bridge, U-shaped galley with extra refrigeration.

## Flybridge

---

MARIA has a custom fiberglass radar arch which holds all the antennas, spreader lights, anchor and steaming light. The bimini runs from the arch forward and covers all of the flybridge with its aft extension. The Nautical Structures low profile electric davit is mounted for easy dinghy launch and retrieval, yet is out of the way and blends into the lines of the bridge. It's support is tucked into the starboard aft corner of the deckhouse so no one bumps into it while moving about the aft deck.

## Cockpit

---

There is a custom teak table on the aft deck where the owners like to eat most of their meals aboard while watching the world go by, sheltered from the elements by the extended flybridge deck. The aft deck has a canvas and clear vinyl enclosure for further protection when necessary.

## Deck and Hull Equipment

---

Nautical Structures Davit. Full canvas enclosure for bridge.

- Fenders and lines
- Hot and cold shower on transom
- Anchors and chain
- Electric dinghy davit
- Swim platform
- Radar arch
- Spreader Lights
- Bimini top and aft extension
- Bow pulpit with rails
- Freshwater wash down system
- Lofrans electric windlass
- Windshield washer and wiper
- Coast Guard safety package
- Navigation lights

## Electronics and Navigation

---

- LOWER HELM:
  - Raymarine E-80 GPS/Chartplotter/Radar
  - Raymarine Autopilot ST 6002
  - Raymarine Raydata (depth, temp, speed)
  - Raymarine VHF radio
- UPPER HELM:
  - Raymarine E-120 GPS/Chartplotter/Radar
  - Raymarine ST 6002 Autopilot
  - Raymarine Raydata
  - Raymarine VHF radio

## Electrical System

---

- 110 volt AC electrical system
- 12 volt DC electrical system
- 8kw Onan generator
- Freedom 2500 watt inverter
- 40amp automatic and manual battery charger
- Battery parallel switch
- Dockside electrical cable

## Engine and Mechanical Equipment

---

- Hydraulic manual steering
- Electric holding tank head
- 36,000 BTU MarineAir reverse cycle air conditioning
- Fresh water cooling system
- Raw water sea strainer
- Engine synchronizers
- Boat leveler trim tabs
- 100gal/day watermaker
- 2 bilge blowers
- Emergency engine stop
- Fuel filters
- Fuel shut-off valve
- 2 Automatic and manual bilge pumps
- Accoustical and thermal insulation

## Additional Salesperson's Remarks

---

MARIA has a well thought out layout that a true cruising couple will understand and appreciate. MARIA was designed for a cruising couple who enjoy spending time aboard. She is roomy, provides ample storage space and carries comprehensive electronics. She has been actively cruised by a knowledgeable couple.

## Disclaimer

---

The Company offers the details of this vessel in good faith but cannot guarantee or warrant the accuracy of this information nor warrant the condition of the vessel. A buyer should instruct his

agents, or his surveyors, to investigate such details as the buyer desires validated. This vessel is offered subject to prior sale, price change, or withdrawal without notice.

# Photos

---



Maria



Salon & Dinette



Entertainment Center & Desk



Galley



Galley Port Side



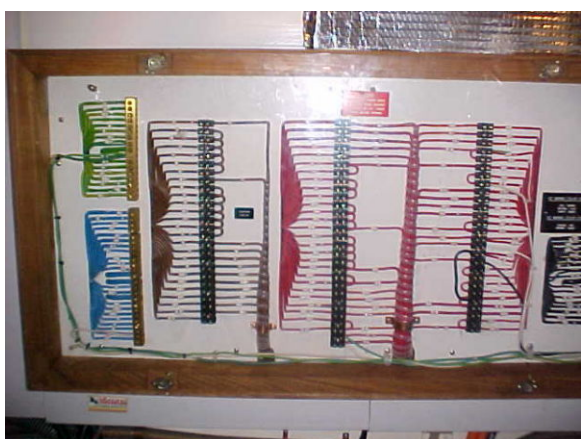
Guest State Room



Master Stateroom



Lower Helm



Electrical Board



Upper Helm



Bridge Aft



Bridge Seating



Bridge Seating



Flybridge Enclosure



Wide Side Deck Starboard



Wide Side Deck Port



Pulpit & Windlass



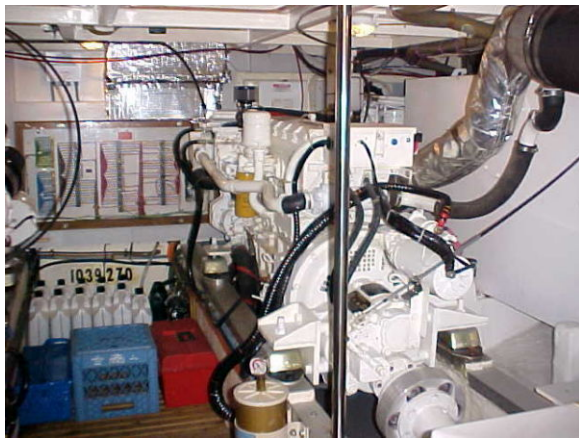
Genset



Fuel Manifold



Engine Room Port



Engine Room Starboard



Lazarette



Foredeck



Aft Deck

